

Widex Cerustop Wax Guard Replacement

Replacing wax guards

Widex wax guards MUST be used at all times.

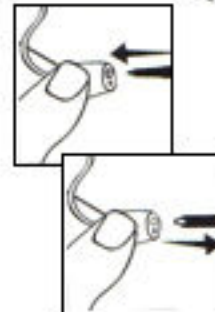
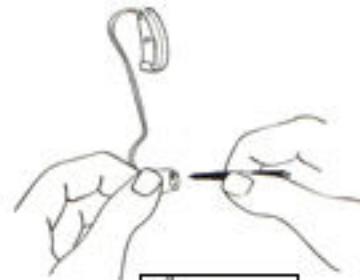
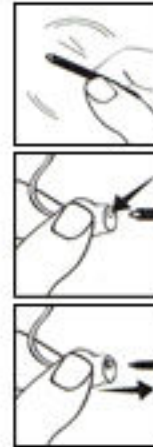
Never re-use a wax guard – always use a fresh one.

Take a fresh wax guard from the packet and insert the hooked end of the holder into the wax guard to be replaced.

Pull the wax guard straight out – do not twist it.

Turn the holder around and push the fresh wax guard firmly into its housing. Remove the holder – the new wax guard will remain in place. Discard the stick with the old guard on it.

If the new wax guard fits loosely, discard it and try again.



Change a wax guard by straight pull out/ push in movement